



Bose[®] Hospitality Sound Solutions

Bose[®] Professional Systems Division

Design | Performance | Support

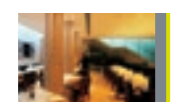
Bose[®] Hospitality Sound Solutions



CONTENTS



BETTER SOUND THROUGH RESEARCH® 4



FOOD AND BEVERAGE 6



LIVE PERFORMANCES 8



FITNESS AND SPA 10



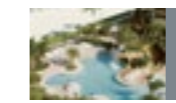
MEETING AND BOARD ROOMS 12



GUEST ROOM ENTERTAINMENT 14



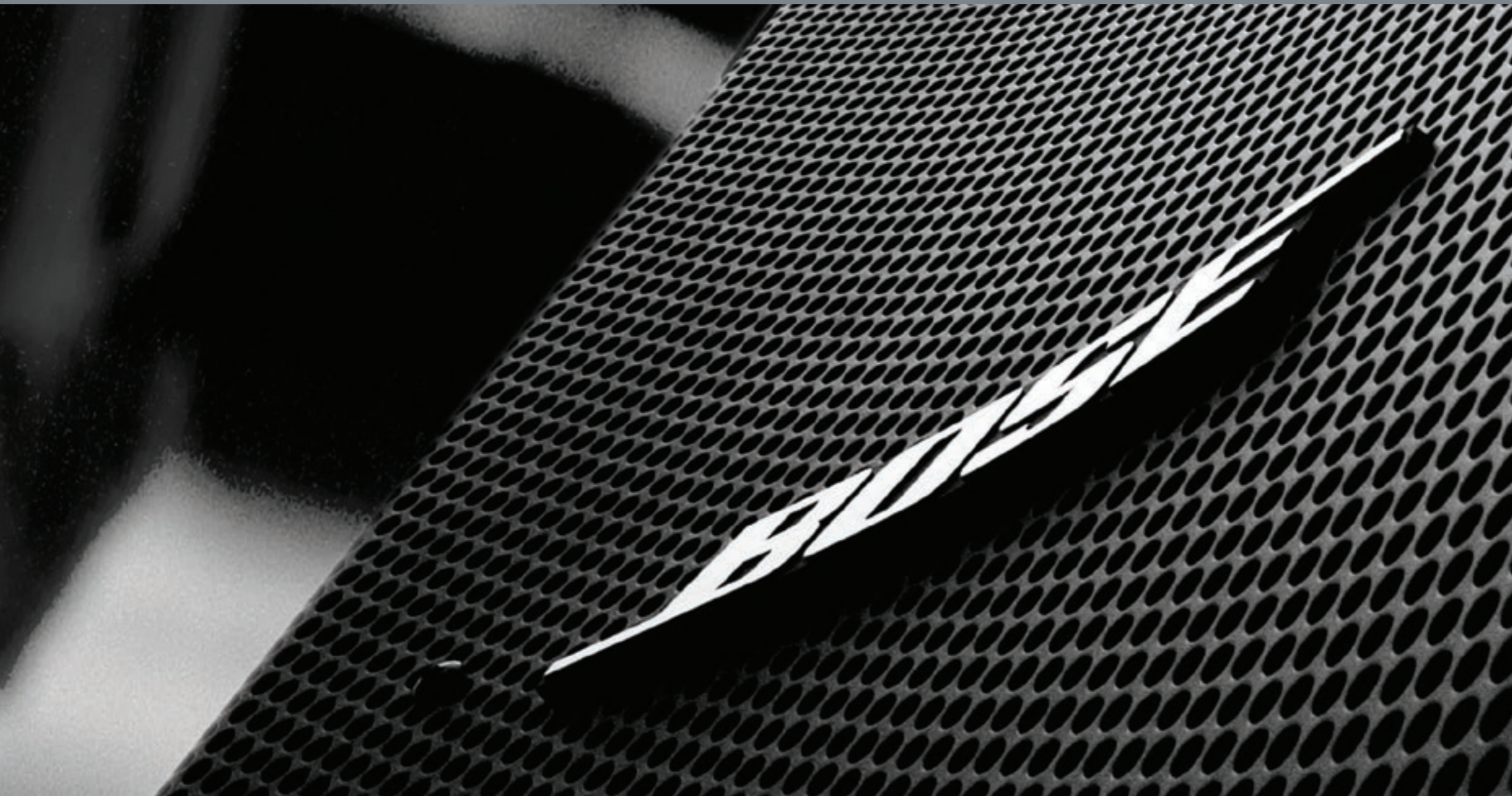
CONVENTION CENTRES AND BANQUET HALLS 16



COMMON AREAS AND OUTDOORS 18



DESIGN AND SYSTEM TOOLS 20

**BETTER SOUND THROUGH RESEARCH**

FOOD AND BEVERAGE

LIVE PERFORMANCES

FITNESS AND SPA

MEETING AND BOARD ROOMS

GUEST ROOM ENTERTAINMENT

CONVENTION CENTRES AND BANQUET HALLS

COMMON AREAS AND OUTDOORS

DESIGN AND SYSTEM TOOLS

BETTER SOUND THROUGH RESEARCH®

Your success depends on giving your guests everything you can and anything your competition cannot. Each detail is important. What they see, what they touch, what they smell, what they taste – all of it needs to be special.

HOW ABOUT WHAT THEY HEAR?

Research shows that three out of four people can identify higher quality sound and prefer it.

Consider your own experience.

Music helps you relax and feel at home. It fosters the mood to contemplate questions and develop answers.

It brings pleasure to the passage of time.

What if you could offer that to your guests, throughout your hotel?

With quality sound solutions from Bose, you can! Bose can help create a new dimension of comfort and luxury for your guests. And a significant edge over your competitors.

In fact many hotel and hotel groups have recognized it and have chosen Bose as their sound partner for their facilities.

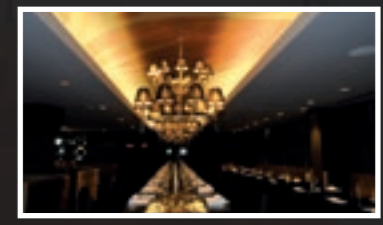
Today you can hear Bose wherever quality sound is important, from Olympic Games, Sistine Chapel, Mecca to the Golden Temple, at home or on the road, from large arenas to intimate settings. Bose brings home the realism of quality sound in every space.

All too often sound is an afterthought in the design process. This leads to the implemented solution falling short of the customer's expectation. Having sound in the forefront of design process, will result in a more coherent and accurate design, that will yield results which are far better and consistent with your space.

Our vast experience of designing unique sound solutions for individual applications helps us achieve our overriding goal to ensure the right and most appropriate solution for each space in your hotel.



A successful hotel bar, restaurant or lounge serves more than food and drinks. It radiates atmosphere – relaxed by day, ramping up to a more sparkling atmosphere after dark. A key factor in creating this vital ambience is music, making your choice of sound system a truly business-critical decision. Bose® sound systems deliver clear, intelligible music and announcements that sound the way it should at all listening levels – even at background volume. In addition, many functions can be programmed to run automatically, eliminating the need for extensive training or complicated system setup and adjustments.



BETTER SOUND THROUGH RESEARCH

FOOD AND BEVERAGE

LIVE PERFORMANCES

FITNESS AND SPA

MEETING AND BOARD ROOMS

GUEST ROOM ENTERTAINMENT

CONVENTION CENTRES AND BANQUET HALLS

COMMON AREAS AND OUTDOORS

DESIGN AND SYSTEM TOOLS

FOOD AND BEVERAGE



FreeSpace® 3 loudspeaker system
 High-performance loudspeaker system for reproducing voice and music in background and foreground applications.
Key features: Combines flush-mount, surface-mount and pendant-mount speakers to work with different room decors and layouts.



FreeSpace® DS 16S, DS 16SE & DS 16F
 Surface-mount (DS 16S, DS 16SE) and flush-mount (DS 16F) 16-watt loudspeakers for background music and speech reproduction with notable presence and detail.
Key features: Flush and surface-mount models are acoustically compatible, so they can be used together in the same space.



FreeSpace® DS 40F & 40 SE
 Flush-mount versatile, high performance, full-range 40-watt loudspeakers designed for foreground and background music and speech reproduction in a wide range of installed applications.
Key features: High output and 125° conical pattern with a frequency range down to 70 Hz.



FreeSpace® DS 100SE & DS 100F
 Surface-mount (DS 100SE) and flush-mount (DS 100F) 100-watt loudspeakers for foreground music and speech reproduction.
Key features: Flush and surface-mount models are acoustically compatible, so they can be used together in the same space. Mount up to 10m (30ft) high.



Panaray® 402® loudspeaker
 Full-range loudspeaker designed for either permanent installations or portable sound reinforcement. It is appropriate for both indoor and outdoor applications.
Key features: Provides a wide 120° x 60° pattern to effectively cover many smaller venues with a single loudspeaker.



Panaray® 502 A loudspeaker
 Designed for indoor permanent installations that require a small form factor for aesthetic and audience sight line considerations.
Key features: Articulated Array® design provides a wide 120° x 70° pattern to effectively cover many smaller venues with a single loudspeaker.



Panaray® 502 B bass loudspeaker
 Low-frequency loudspeaker designed for indoor permanent installations.
Key features: Features patented Acoustimass® speaker technology to deliver non-localizable bass to 45 Hz.



MB12 & 24 / MB12 & 24 WR modular bass loudspeaker
 Designed to provide bass augmentation for Bose® LT arrays and other subwoofer applications.
Key features: Compact 2 x 12" (305 mm) configuration. Allows minimal-height arrays when used with LT mid/high loudspeakers.



Live performances translate to lots of equipment, including heavy loudspeakers, monitors, PA systems, mixing boards, amps and piles of cables. Bose provides a completely different approach to live sound amplification. Our unique, vertical line array speaker systems offer wide uniform sound coverage, exclusive tone-shaping technologies and all-in-one convenience. There's no need for separate monitors and PA speaker systems. What more? It all blends elegantly with your décor. You can also add a T1 ToneMatch® audio engine for multichannel sound tools, including a suite of studio-class effects. Designed for use by musicians, mobile DJs, teachers, business professionals and event planners.



BETTER SOUND THROUGH RESEARCH

FOOD AND BEVERAGE

LIVE PERFORMANCES

FITNESS AND SPA

MEETING AND BOARD ROOMS

GUEST ROOM ENTERTAINMENT

CONVENTION CENTRES AND BANQUET HALLS

COMMON AREAS AND OUTDOORS

DESIGN AND SYSTEM TOOLS

LIVE PERFORMANCES

LI® Compact

This portable sound system works both as a PA and monitor system, delivering even coverage, sound clarity and detail for musicians and the audience.

Coverage: 180° H x 40° V

Key features: Unobtrusive design, reduces the need for numerous loudspeakers and electronics. Suitable for smaller spaces with audiences of up to 100.

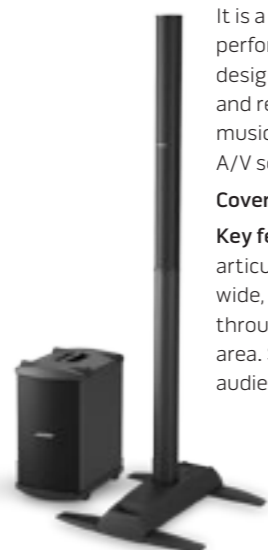


LI® Model I S

It is a unique combination of performance and portability designed for the production and reproduction of live music, music playback, speeches and A/V sound reproduction.

Coverage: 195° H x 10° V

Key features: 12-driver articulated line array produces wide, uniform sound coverage throughout the entire listening area. Suitable for spaces with audiences of up to 300.

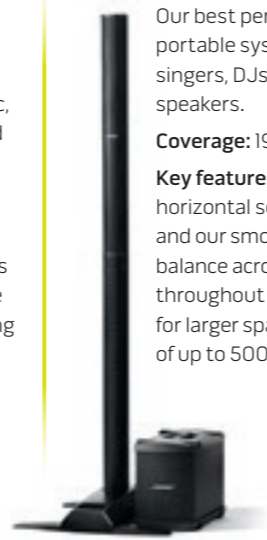


LI® Model II system

Our best performing, most portable system for musicians, singers, DJs and public speakers.

Coverage: 195° H x 0° V

Key features: Delivers wide horizontal sound coverage and our smoothest tonal balance across the stage and throughout the room. Suitable for larger spaces with audiences of up to 500.



B2 bass module

The B2 bass module delivers the most low-frequency output for LI® system users who need more powerful bass for larger audiences.

Key features: A switch on the rear panel offers the flexibility of three output levels, depending on application or preference. The LI® system automatically senses and equalizes the chosen setting for optimized performance.



T1 ToneMatch® audio engine

Powerful multichannel sound tool for Bose® LI® system, with controls so advanced they adapt to you and your instrument.

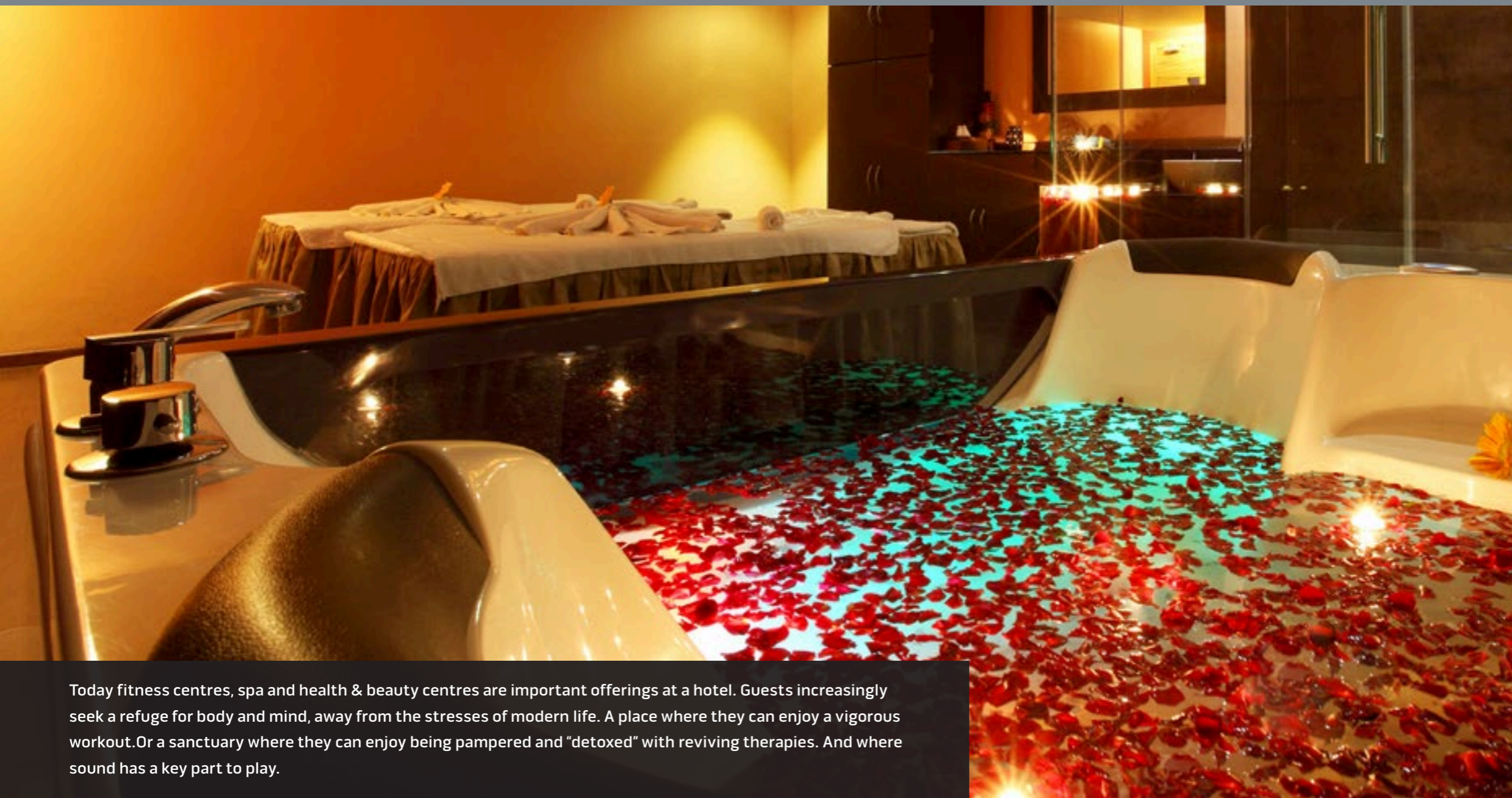
Key features: Features over 100 proprietary ToneMatch® presets for instruments and microphones. It also includes Bose zEQ, storable scenes and a suite of studio-class effects.



PackLite® amplifier model A1

Designed for instruments that require additional headroom and increased output in the deep bass range, such as electric bass, bass drum and high output playback of dance music.

Key features: Powers up to two additional B1 bass modules or one B2 bass module. Includes 1/4" TRS cable and nylon carry pouch.



Today fitness centres, spa and health & beauty centres are important offerings at a hotel. Guests increasingly seek a refuge for body and mind, away from the stresses of modern life. A place where they can enjoy a vigorous workout. Or a sanctuary where they can enjoy being pampered and “detoxed” with reviving therapies. And where sound has a key part to play.



BETTER SOUND THROUGH RESEARCH

FOOD AND BEVERAGE

LIVE PERFORMANCES

FITNESS AND SPA

MEETING AND BOARD ROOMS

GUEST ROOM ENTERTAINMENT

CONVENTION CENTRES AND BANQUET HALLS

COMMON AREAS AND OUTDOORS

DESIGN AND SYSTEM TOOLS

FITNESS AND SPA



FreeSpace® 3 loudspeaker system

High-performance loudspeaker system for reproducing voice and music in background and foreground applications.

Key features: Combines flush-mount, surface-mount and pendant-mount speakers to work with different room decors and layouts.



Panaray® 302™ A loudspeaker

This loudspeaker reproduces music with the presence and depth you would expect only indoors. All while disappearing into nearly any outdoor setting.

Key features: Its Articulated Array® design provides a wide 175° x 90° pattern to effectively cover a broad area with a single loudspeaker.



FreeSpace® DS 100SE loudspeaker

Premier, high-performance, full-range surface-mount loudspeaker designed for foreground music and speech reproduction in a wide range of installed applications.

Key features: Rotatable array that delivers a 180° x 75° coverage pattern and a frequency range down to 60 Hz.



FreeSpace® DS 40F

Flush-mount versatile, high-performance, full-range, loudspeaker designed for foreground and background music and speech reproduction.

Key features: High output and 125° conical pattern with a frequency range down to 70 Hz.



FreeSpace® DS 16S & DS 16F

Surface-mount (DS 16S) and flush-mount (DS 16F) 16-watt loudspeakers for background music and speech reproduction with notable presence and detail.

Key features: Flush and surface-mount models are acoustically compatible, so they can be used together in the same space.



131° environmental speakers

Flush-mounted design for pre-cut boat speaker openings. Ported enclosure for consistent high-fidelity audio performance.

Key features: Tested to withstand snow, rain, salt and extreme temperatures, have innovative helical voice coils for a more consistent sound field and enhanced clarity.



ControlSpace® CC-16

An elegant wall-mounted device designed to provide end-user control of ControlSpace systems. Controls a variety of system elements, from switching audio sources to selecting “scenes” or system configurations.

Key features: Bitmap LCD and four buttons for displaying and controlling the system settings.



Bose sound systems reproduce rich, natural music for weddings and parties, along with clear, intelligible speech for meetings and conferences. Elegant and compact, they deliver lifelike sound without being obtrusive or unsightly.



- BETTER SOUND THROUGH RESEARCH
- FOOD AND BEVERAGE
- LIVE PERFORMANCES
- FITNESS AND SPA
- MEETING AND BOARD ROOMS**
- GUEST ROOM ENTERTAINMENT
- CONVENTION CENTRES AND BANQUET HALLS
- COMMON AREAS AND OUTDOORS
- DESIGN AND SYSTEM TOOLS

MEETING AND BOARD ROOMS



Panaray® 402® Series II loudspeaker

A full-range loudspeaker for voice and music reproduction – indoors and outdoors.

Key features: Proprietary Articulated Array® speaker configuration delivers wide, even coverage. Can withstand sand, snow, rain, salt and temperature extremes of -40°C (-40°F) to 70°C (158°F).

Panaray® 12 MA12 EX modular line array loudspeaker

Designed to provide outstanding vocal intelligibility in acoustically demanding spaces. Slim column enclosure blends with almost any décor.

Key features: Wider 160° horizontal coverage and weather-resistant components allow use in outdoor applications.



FreeSpace® DS 16F loudspeaker

Flush-mount 16-watt loudspeakers for background music and speech reproduction with notable presence and detail.

Key features: Wide, even 140° conical pattern and frequency range down to 80 Hz.



FreeSpace® DS 40F

Flush-mount versatile, high-performance, full-range, loudspeaker designed for foreground and background music and speech reproduction.

Key features: High output and 125° conical pattern with a frequency range down to 70 Hz.



LI® Compact system

This portable sound system works both as a PA and monitor system, delivering even coverage, sound clarity and detail for musicians and the audience.

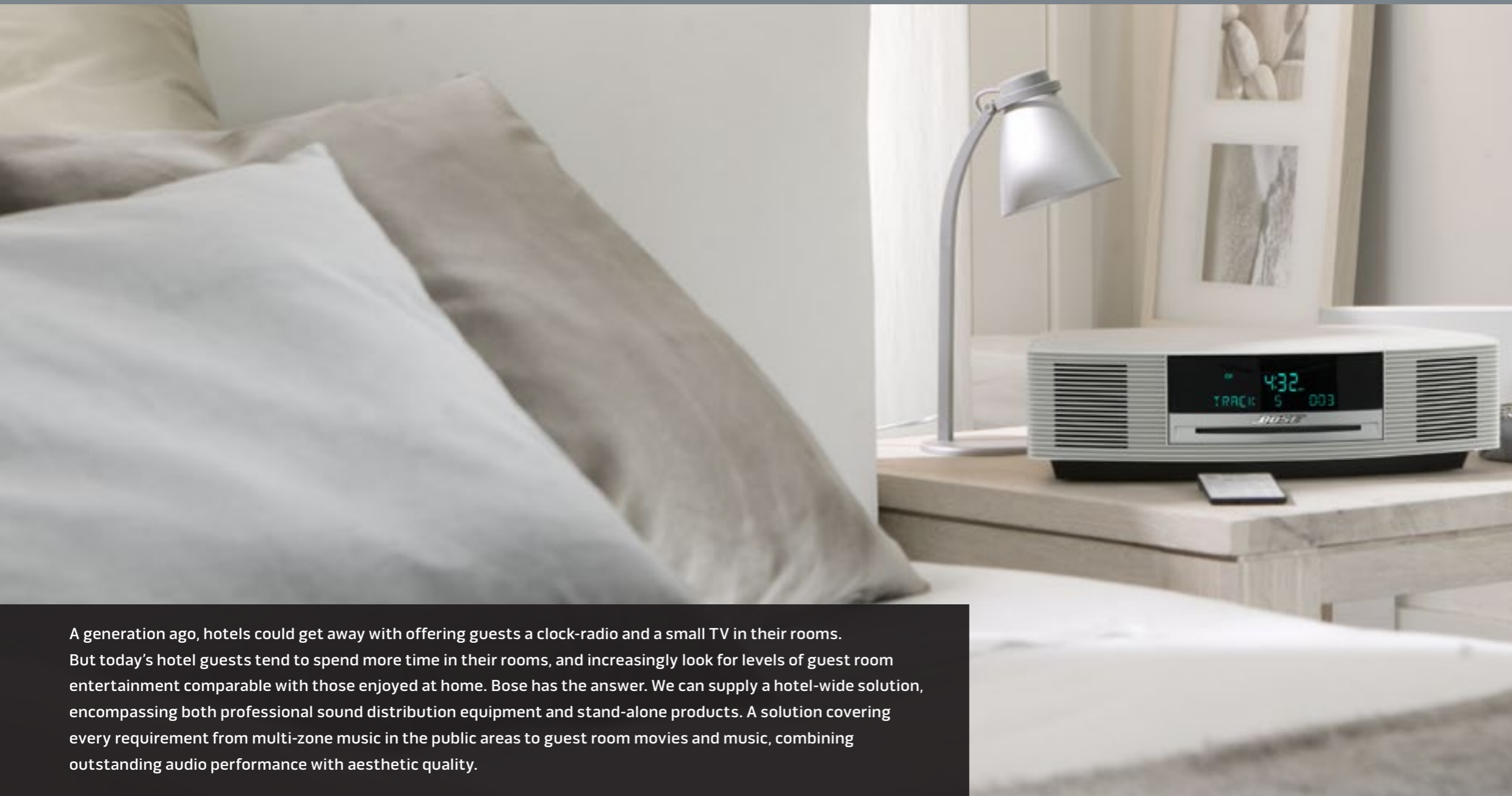
Key features: The compact size/weight ensures it can be effortlessly set up within seconds by one person, placing it on the top of a table. With a built in mixer conveniently connect a microphone, laptop or iPod while the outpt allows everything to be recorded.



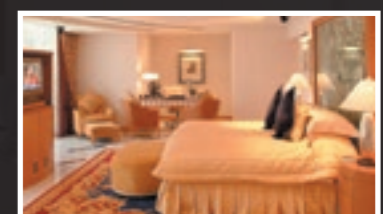
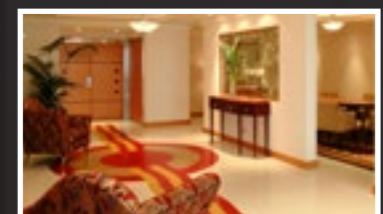
Panaray® MB4 modular bass loudspeaker

This compact bass module matches with other Bose® professional loudspeakers for sound with more power and impact.

Key features: Lightweight for easy portability.



A generation ago, hotels could get away with offering guests a clock-radio and a small TV in their rooms. But today's hotel guests tend to spend more time in their rooms, and increasingly look for levels of guest room entertainment comparable with those enjoyed at home. Bose has the answer. We can supply a hotel-wide solution, encompassing both professional sound distribution equipment and stand-alone products. A solution covering every requirement from multi-zone music in the public areas to guest room movies and music, combining outstanding audio performance with aesthetic quality.



- BETTER SOUND THROUGH RESEARCH
- FOOD AND BEVERAGE
- LIVE PERFORMANCES
- FITNESS AND SPA
- MEETING AND BOARD ROOMS
- GUEST ROOM ENTERTAINMENT**
- CONVENTION CENTRES AND BANQUET HALLS
- COMMON AREAS AND OUTDOORS
- DESIGN AND SYSTEM TOOLS

GUEST ROOM ENTERTAINMENT



SoundLink® Bluetooth® Mobile speaker III
 Allows your guests to play their music from any smartphone, tablet or laptop via *Bluetooth*® with sound quality unlike any other speaker this size.
Key features: Small footprint ideal for compact bedside tables. User instructions printed on top.



SoundDock® III digital music system
 Lets your guests play their music from any iPod® or iPhone® with the new Lightning connector and enjoy it with Bose quality sound while it's being charged.
Key features: Supports latest Apple Lightning connector. Charging during playback. Flexible dock increases durability. Volume limiting.



Bose® Wave® music system III
 A Wave radio with added CD/MP3 playback capability offering the most versatile in-room music solution from Bose.
Key features: Award-winning sound offering a touch of luxury guests will appreciate. Auto dimming display eliminates disturbance at night.



Bose® Solo TV sound system
 A one-piece solution that fits neatly under the TV or can be concealed within the TV credenza for a fully integrated look.
Key features: Improved sound quality and speech intelligibility. Connected by a single cable to the TV. Hospitality firmware limits volume and bass output to avoid disturbance of adjacent guest rooms.



CineMate® 1 SR home cinema system
 Spacious home cinema sound from a sleek soundbar speaker customized to room size, shape and furnishings.
Key features: No complex cable-runs, making it an ideal solution even for retro-fits. Hospitality firmware limits volume and bass output to avoid disturbance of adjacent guest rooms.



CineMate® GS II home cinema system
 This 2.1 speaker system is the easiest way to enjoy Bose home cinema performance and bring out the full audio potential of your HDTV.
Key features: Proprietary TrueSpace® digital processing circuitry, Gemstone® speaker array design, proprietary Videostage® 5 decoding and post-processing circuitry.



Lifestyle® 535/525 home entertainment system
 These 5.1 speaker systems delivers vivid, theatre-like sound that brings movies, sports, video games and music to life.
Key features: ADAPTiQ®, Unify® intelligent integration system, Direct/Reflecting® speaker technology, optionally available flush in-wall/ceiling speakers.



VideoWave® III entertainment system
 The only HDTV with a complete Bose home cinema and music system built inside. All this at the control of your guest's finger tips with an intuitive 6 button Clickpad remote control.
Key features: PhaseGuide™ technology gives your guest an immersive home cinema experience. Volume limiting. Available in 46" and 55".



Convention Centres are designed to allow for large business meetings or gatherings. A sound system here needs to be as flexible as the space to deliver sound for varying requirements. At Bose we offer solutions that adapt to different requirements, are easy to use, tamper-proof, reliable and décor-friendly.

CONVENTION CENTRES AND BANQUET HALLS



BETTER SOUND THROUGH RESEARCH

FOOD AND BEVERAGE

LIVE PERFORMANCES

FITNESS AND SPA

MEETING AND BOARD ROOMS

GUEST ROOM ENTERTAINMENT

CONVENTION CENTRES AND BANQUET HALLS

COMMON AREAS AND OUTDOORS

DESIGN AND SYSTEM TOOLS



Panaray® 802® Series III loudspeaker
A full-range loudspeaker for louder foreground applications – indoors and outdoors.
Key features: Proprietary Articulated Array® speaker configuration delivers wide, even coverage. Can withstand sand, snow, rain, salt and temperature extremes of -40°C (-40°F) to 70°C (158°F).



RoomMatch® utility RMU208
It is intended for use in high-quality foreground music, under-balcony, zone fill, and vocal-range floor monitor applications.
Key features: Bose EMB2 compression driver provides mid/high frequency voicing. Dual 8-inch woofers provide full-range output.



Panaray® LT family
Large and medium format waveguide designed for use with other LT loudspeakers to form Coherent Zone arrays in medium to large permanent installations requiring precise coverage and high intelligibility.
Key features: High and medium output, mid/high loudspeaker for indoor and outdoor applications.



RoomMatch® series of loudspeakers
Designed to deliver superb audio quality for fixed-installations in almost any room size, shape, acoustic requirement or budget. RoomMatch® modules form a new class of curvilinear array that allows seamless audio quality, with consistent front-to-back and side-to-side tonal balance.
Key features: 15 different coverage patterns - Horizontal: 55°, 70°, 90°, 120° and vertical: 5°, 10°, 20°, 40°, 60°, Concert-Quality Sound, RoomMatch® Waveguide Technology, Progressive Directivity Arrays.



RoomMatch® RMS215/ RMS218 subwoofer
Designed primarily to extend the low-frequency response of Bose RoomMatch® arrays to 40 Hz. There's another variant – RoomMatch® RMS218 which is a very low-frequency subwoofer.
Key features: Dual Bose LF15 15-inch, high-excursion, 4-inch voice coil transducers. 1000 W long-term/ 4000 W peak power handling.



A public area sound system should be able to deliver pleasing foreground or background music. It must be easy to use, tamper-proof, reliable, décor-friendly, and expandable or upgradeable. It has to be capable of creating different atmospheres in the lobby, bar and restaurant and give you the ability to vary the mood and volume according to the time of day, avoiding sound overspill.



BETTER SOUND THROUGH RESEARCH

FOOD AND BEVERAGE

LIVE PERFORMANCES

FITNESS AND SPA

MEETING AND BOARD ROOMS

GUEST ROOM ENTERTAINMENT

CONVENTION CENTRES AND BANQUET HALLS

COMMON AREAS AND OUTDOORS

DESIGN AND SYSTEM TOOLS

COMMON AREAS AND OUTDOORS



FreeSpace® DS 16S, DS 16SE & DS 16F

Surface-mount (DS 16S, DS 16SE) and flush-mount (DS 16F) 16-watt loudspeakers for background music and speech reproduction with notable presence and detail.

Key features: Flush and surface-mount models are acoustically compatible, so they can be used together in the same space.



FreeSpace® DS 40F & 40 SE

Flush-mount versatile, high-performance, full-range, loudspeakers designed for foreground and background music and speech reproduction in a wide range of installed applications.

Key features: Intelligible music and speech reproduction for flush-ceiling or pendant-mount applications. High output and 125° conical pattern with a frequency range down to 70 Hz.



FreeSpace® DS 100SE & DS 100F

Surface-mount (DS 100SE) and flush-mount (DS 100F) 100-watt loudspeakers for foreground music and speech reproduction.

Key features: Flush and surface-mount models are acoustically compatible, so they can be used together in the same space. Mount up to 10m (30ft) high.



FreeSpace® 360P Series II loudspeaker

This loudspeaker reproduces music with the presence and depth you would expect only indoors. All while disappearing into nearly any outdoor setting.

Key features: 360° coverage, withstands sand, snow, rain, salt and temperature extremes of -40°C (-40°F) to 70°C (158°F).



Panaray® 302™ A loudspeaker

This loudspeaker reproduces music with the presence and depth you would expect only indoors. All while disappearing into nearly any outdoor setting.

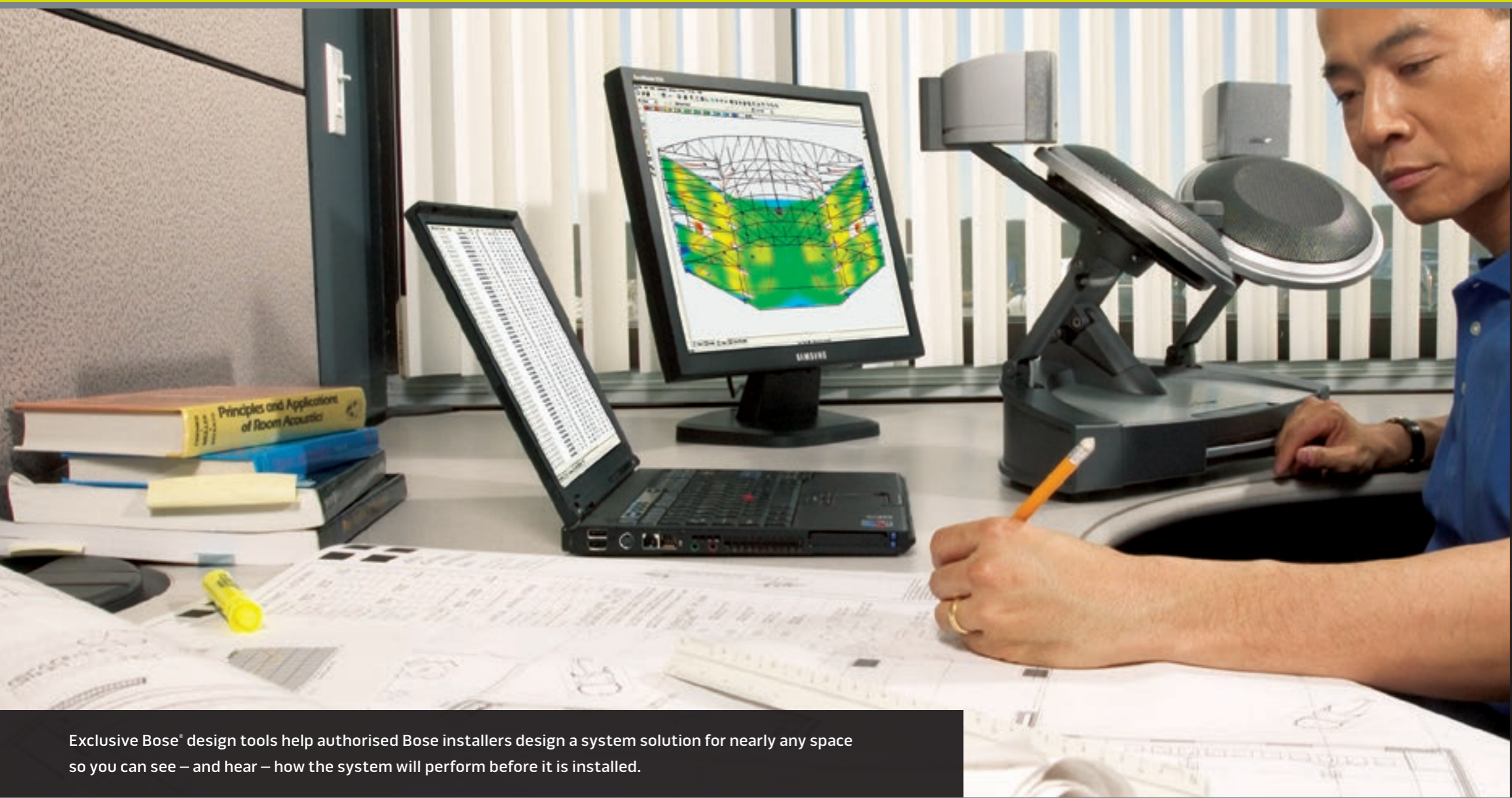
Key features: Its Articulated Array® design provides a wide 175° x 90° pattern to effectively cover a broad area with a single loudspeaker.



Panaray® 402® A loudspeaker

A full-range loudspeaker for voice and music reproduction – indoors and outdoors.

Key features: Proprietary Articulated Array® speaker configuration delivers wide, even coverage. Can withstand sand, snow, rain, salt and temperature extremes of -40°C (-40°F) to 70°C (158°F).



Exclusive Bose® design tools help authorised Bose installers design a system solution for nearly any space so you can see – and hear – how the system will perform before it is installed.

- BETTER SOUND THROUGH RESEARCH
- FOOD AND BEVERAGE
- LIVE PERFORMANCES
- FITNESS AND SPA
- MEETING AND BOARD ROOMS
- GUEST ROOM ENTERTAINMENT
- CONVENTION CENTRES AND BANQUET HALLS
- COMMON AREAS AND OUTDOORS
- DESIGN AND SYSTEM TOOLS**

DESIGN AND SYSTEM TOOLS



Modeler® sound system software
Modeler® sound system software gives designers the ability to predict and design for sound systems.



Auditioner® playback system III
This innovation allows listeners to hear how a proposed audio system will sound before it's installed or even before the facility is built.



IZA 250-LZ/190-HZ, ZA 250-LZ/190-HZ integrated zone amplifiers
This mixer/amplifier provides signal processing, mixing, routing, paging and two-channel amplification all in one component. Bose® FreeSpace ZA 250-LZ and ZA 190-HZ zone amplifiers are designed to provide basic amplification and sound system expansion when using front-end signal processing. Once the unit is customized for the property, your staff has easy access to simple controls that they can operate with confidence.

FreeSpace® DXA 2120 digital mixer/amplifier
This mixer/amplifier provides signal processing, mixing, routing, paging and two-channel amplification all in one component. Once the unit is customized for the property, your staff has easy access to simple controls that they can operate with confidence.



PowerMatch® series of amplifiers
Provides concert-quality sound with a high level of scalability and configurability.
Key features: The PowerMatch® line offers four models with multiple channel and power options, each including an integrated audio DSP, front panel interface and USB connection. Ethernet-equipped versions enable network configuration, control and monitoring.

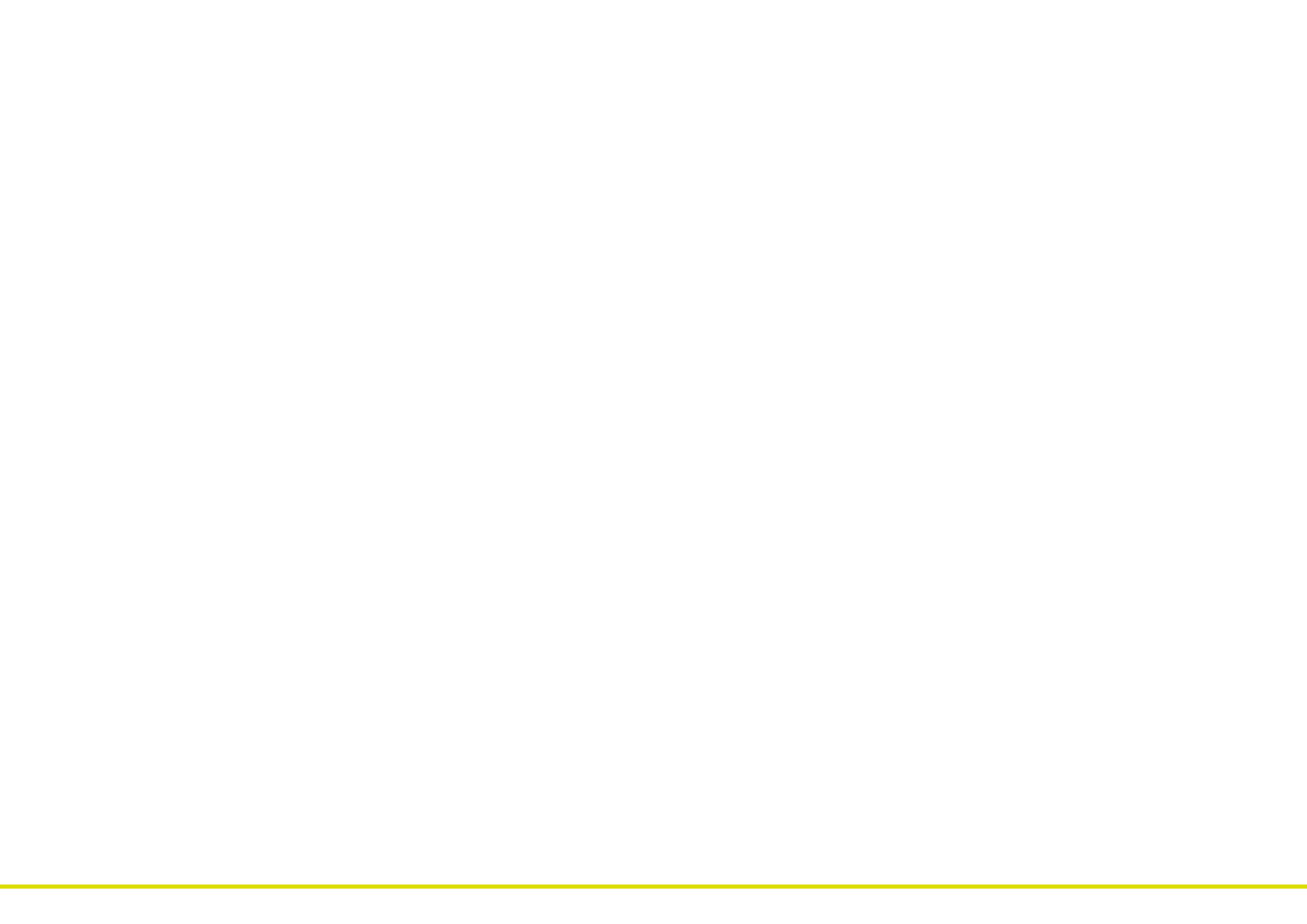
- PM8500/N
- PM8250/N
- PM4500/N
- PM4250/N



ControlSpace® CC-16 & 64
Elegant wall-mounted device designed to provide end-user control of ControlSpace® systems. Controls a variety of system elements, from switching audio sources to selecting "scenes" or system configurations.
Key features: User-friendly, Compact size and reliable.



ControlSpace® ESP engineered sound processor
Offers advanced signal processing that meets today's strict requirement for low-latency, high-quality digital conversion, and low-noise/high dynamic range audio applications. The processors come in 4 variants: ControlSpace® ESP – 880, ESP- 00 Series II, ESP – 1240, ESP - 4120.





Call us today for more information or to arrange an individual design consultation.